

Sheddie News

April 2021

The official newsletter of MENZSHED NZ

From The Chairman

It has been great to see what is being made around the country and the variety of projects that have come from the sheds. You are all making a difference within your communities and I am sure that your efforts are not going unnoticed. Since the last newsletter there have been a small number of new sheds starting up. This goes to show that communities value what you do and can see the positive outcomes from all your efforts.

This years AGM will be a challenge as we are to use a virtual AGM again. It will provide us with challenges especially when it comes to remit voting etc. The regional reps positions have closed and I am pleased that the reps of regions one, three and five have continued in their positions but am a little disappointed that two regions could not obtain a rep.

As our focus is on "Men's Health and Well Being" I would like to take a line or two to encourage everyone of you to take up the offer of a covid jab. Not only will you protect yourself but also you will be protecting your community. Also on men's health! We are very vulnerable to prostate cancer. Do take the time to have a test for that. Early detection means a good outcome and a whole lot more time in the shed for you.

By the time this newsletter is sent out I am hopeful that we can fill the positions of secretary as Roger Bowman is leaving us after all these years. He is to be commended for all the effort he has put into the position of secretary and also for his wisdom that he has provided the executive. He will be surely missed.

Keep up the effort

Trevor Scott

Our New Web Master

Welcome Bill Greenwood from the Bishopdale Menz Shed (Christchurch) to this role. Bill will support the executive team by managing the website, updating shed content, maintaining our national sheds database and administering the sheddie forum on Facebook.

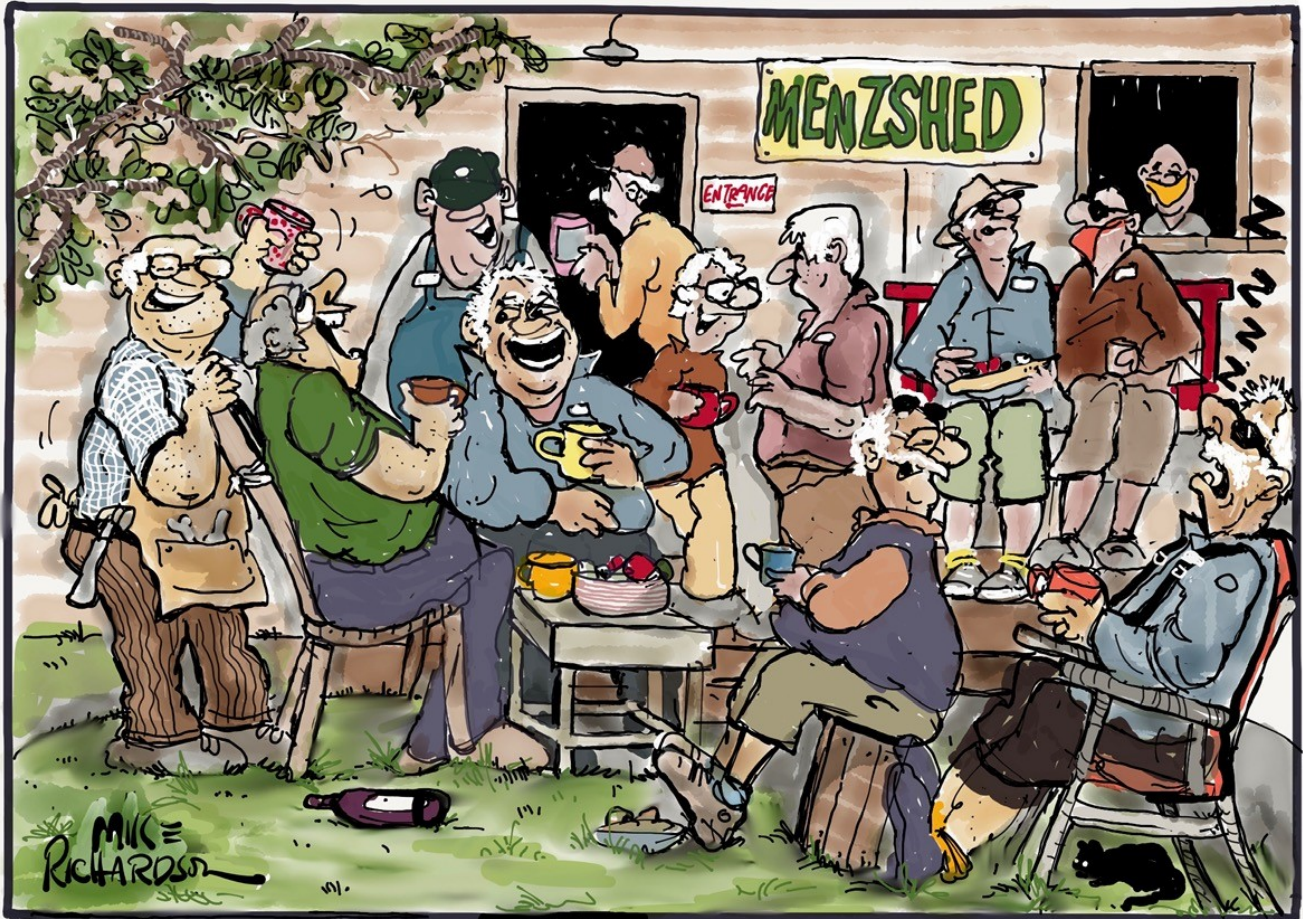
Bill's 50 years' government service (locally, nationally and internationally) specialized in Urban Design and Road Safety Management Systems. Community service has always been an important part of his life - a past Jaycees and Rotary President.



To contact Bill, please use the email address webmaster@menzshed.nz.

Time to Update our website

I have been looking through a number of shed pages on our web site and found that the material presented is not all that up to date. Many sheds have been operating for many years and their web pages don't reflect what they are doing in recent years. I have had a number of folk ring me regarding when a shed is open etc. Could I ask that each shed look at their web page on our site and check that it shows, location, opening times, contact person details, (two people would be great) an email address to contact the shed, if you have a facebook page or web site for your shed this can be shown. Also it may be time to rewrite any written material and up date pictures. I appreciate keeping web pages up to date can be a hassle but this for many of the public is their first port of call to MENZSHEDS. Send updates to Bill at webmaster@menzshed.nz

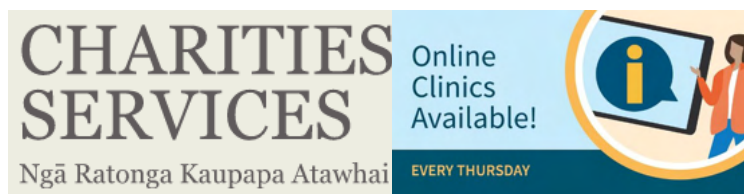


THOSE SMOKO BREAKS-NEVER A DULL MOMENT..

Mike the cartoon artist tells me that he still has copies of his cartoon book "MENZSHED MADNESS". The cost is \$20. He can be contacted by email: mmrichardson@nowmail.co.nz

From The Editor

Many thanks to all the sheds that have contributed to the newsletter. Sometime it is necessary to reduce the article down in size in order to get it to fit onto the page. I hope I have not offended any shed by doing this. The more articles we receive the better the read. So keep up the sending of interesting things you are doing in your shed. Articles can be sent to chairman@menzshed.nz



Charities Services offer one-on-one online clinics each Thursday. They have a range of appointments available depending on what questions you need answered. Financial reporting, funding, registration and general appointments are available throughout the day, in 20 minute blocks.

Find out more and sign up for a one-on-one clinic [here](#), or go to:

<https://charitiesupdatecreatesend1.com/t/j-l-akivkk-l-m/>



A reminder to Facebookers that we have a shedder group called the MENZSHED NZ shed forum at <https://www.facebook.com/groups/917022518450093>

Presently 47 sheds are represented by 89 shedders.

To participate, visit the site and answer the two screening questions.

After your application is accepted, you will be able to read and post to the site.

Changes to Trust Law NZ

There have been changes to the Trust Act 2019 that take effect from 20th January 2021. It would pay each MENZSHED Trust to visit the charities site to check that their documentation take into account the new act. The following link gives you a clear understanding of what is required.

<https://charities.govt.nz/news-and-events/blog/the-new-trusts-act-what-does-it-mean-for-registered-charities/>

Also visit the Following site for further information.

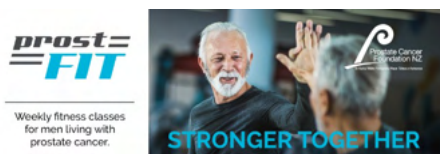
<https://www.justice.govt.nz/justice-sector-policy/key-initiatives/trust-law-reform/>



Google Analytics is a useful tool if you're interested to know about visitors to your website. There are various how-to tutorials on YouTube or websites if you're keen to try Analytics.

Since we started keeping stats on our national site in 2016, site hits have risen from 32k to 64k per year, and unique users 24k to 46k.

Each user spends about two minutes on the site, viewing 2-3 pages. About 90% are from NZ, followed by the USA 2% and Australia 2%.



From the Prostate Cancer Foundation website: "Prost-FIT is designed specifically for men living with prostate cancer, at any stage of diagnosis or treatment. Research has shown there are significant benefits gained from exercise that may both assist with recovery and delay advance of the disease. Involving both physical and cognitive elements, delivered in a supportive environment with an emphasis on fun and social interaction, Prost-FIT also offers camaraderie and opportunities for shared experiences.

Prost-FIT is accredited by the Prostate Cancer Foundation NZ and delivered by trained registered exercise professionals. There are modest charges to attend the classes, however if the cost of attending Prost-FIT may cause undue hardship financial support is available. If you would like to apply for Financial Assistance [click here](#) to view / download the application form. For information about classes throughout NZ, visit the [website](#).

MENZSHED NZ Annual General Meeting

Monday 17 May at 7:30pm

This will be held using GoToWebinar - as we have done other years. Information concerning registration for the webinar, a draft agenda and remits has been sent to the primary contact of each member shed. We look forward to all member sheds being represented at the meeting.

For local business insurance, talk to a local.

Insurance should be straightforward. My experience with the unique demands of local businesses means I specialise in insurance solutions tailored to meet your needs.
For quality advice on your policy, from a broker with local knowledge, get in touch today.



Bruce Mawson
Commercial Broker
P: 021 845 542
E: bruce.mawson@rothbury.co.nz

rothbury.co.nz



From our Sponsor NZSafety Blackwoods

NZSafety Blackwoods have been supporters of the Menzshed movement for some years.

Over the last couple of years our movement has lost the contact we had with the NZSafety Blackwoods dealers and sheds have been missing out on deals that they have to offer our sheds.

To receive these benefits and discounts that they offer us, just show proof that you are a shed member of a New Zealand shed to receive their discounts and specials.

They have all the safety equipment and tools that your shed would require.

Let's support those that support us.

Next Newsletter

The next newsletter is due for publication at the end of July. The deadline for articles for that newsletter is **Friday 23rd July**. When you have completed an interesting project or done something of interest with others down at the shed, send us an article. Don't wait for the deadline as it give the editor time to arrange articles. It is always good to see pictures with an article. Format for article please use Word and Jpeg for pictures as these are easy to work with. Send articles to chairman@menzshed.nz

Region One News

Northland and Auckland

Rotary Awards to North Shore Men's Shed Members

On 22nd Feb, I attended the launch meeting for the Kaipatiki Rotary Club, (the amalgamation of two other North Shore Rotary Clubs). As part of their community outreach they awarded six Paul Harris Fellowships to members of the community who have made significant voluntary contributions to their various communities. Most of the recipients were adults but one was a school. I was there principally to support Roger Dallimore and Richard Redgrove who were nominated by the Shed. In Roger's case his citation mentioned his volunteering with the Kaipatiki Project and with boating club activities as well as his considerable contribution to the Shed. Richard's citation covered his work with the Shed and many years (along with his wife Carol) involvement with the scout movement in their home area of Sunnynook. As a matter of interest the Paul Harris Medal is named for the founder of Rotary who worked with other men in Chicago in 1905 to found the organisation. A fellowship costs a Club \$US1,000 and the funds are used by the Rotary Foundation to finance many projects around the world including health and education. Their most spectacular success has been the virtual elimination of polio with Afghanistan and Pakistan remaining as the only two countries where the disease is endemic.

Dave Whiting



Richard Redgrove receiving his award



Roger Dallimore receiving his award

Howick Community MenzShed Inc.

Our shed is finally up and running two mornings a week at this stage. One of the first community projects completed is a derby trolley built for the G.J. Gardiner sponsored Beachlands Annual Trolley Derby organised by Pohutukawa Coast Rotary. The trolley was raffled and raised over \$1,000 for Kids Can charity. Mitre 10 donated the materials – hence the bright colour!



Region One News Continued

Food Sharing Cupboard for Northcote

The guys at the North Shore Men's Shed have been busy building this Food Sharing Cupboard for the Kaipatiki Trust.

It is located in Tonar St, Northcote and local residents can donate or collect food as required.



Kevin, Richard, Jim, David and Bernard have spent several weeks building and installing the cupboard



Region One News Continued

Hibiscus Men's Shed

Our Place Your Place



This past year has seen significant growth both in membership, work output, enquiries and huge growth in our endeavours to establish new premises at Memorial Park in Silverdale. We have presently capped the membership to sixty-six persons due to the limited floor space we occupy. Amenities, health and safety are paramount considerations.

Business 'out the door' has been the result of increasing community awareness of the Shed and its abilities via Facebook, HMS website, increased marketing, newsletters and networking. We have become quite involved with various environmental and conservation groups including Local Board and Council with the production of vermin traps as part of the national pest free environmental movement. Manufacturing 'housing' for water based solutions is another major income stream for the Shed. Daycare, school and other community groups keeps the shed busy with the supply of toys, equipment, refurbishment and occasional minor on-site work.

THE NEW BUILD

We are fast learning that new builds don't just happen without time delays with the various professionals involved, the multitude of consents and 'sign offs'. The covid lock-downs further delayed our aspirations, however we are so close to commencement at this time. The new Shed with a floor area of over 450m² was laid March this year with the necessary plumbing and electrical componentry installed. The Shed design will see partitioning into engineering, carpentry, hobbies and IT departments including a community area complete with a small commercial kitchen. We envisage this area will be used by ourselves for various meetings with an emphasis on hire-age to local businesses and groups. A mezzanine floor completes the design.

The shell construction is steel framed finished in colour steel, supplied by We expect this construction to be 'key ready' approximately mid May.

From here our efforts really start with the internal finishing and fit-out of partitioning walls, gib, painting and floor covering. Only then can we commence the massive job of machinery installation.

This new building will transport us to growth in membership and production output while giving the members more opportunity to work on their own projects in a spacious, planned environment.



Watching the expansion of Men's Sheds in New Zealand is pleasing to witness knowing that so many more people will share the benefits we all enjoy.

Thank you and Regards

Kevin Stokes

Vice Chair

Hibiscus Men's Shed Trust. www.hibshed.org.nz

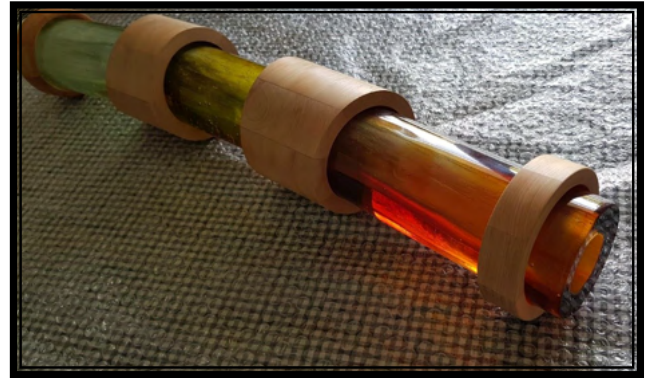
Region Two News

Waikato, Bay of Plenty and Gisborne

Busy times at the Morrisville Community Menzshed

Shed size has always constrained membership and along with the rent of \$13000 a year we have had our challenges. However in December the local Council granted us the use of a commercial section if we could erect a suitable shed. So it is all on with fund raising and grant applications.

We can relate to the “Repair Shop” as we get a lot of refurbishment work along with the specialty jobs, like turning pieces for an artists sculpture.



Another was a Free Library for a local school. We put the book with our names on the top of it and the children did the rest of the painting.



Recently we made a memorial bench seat for a young motorcyclist.

We have just completed an 8 week “Women’s Project Nights” course for 5 women. They have had a ball, and we have had a lot of fun helping and teaching them workshop skills. From them we have enough names to run another one later in the year. This bird feeder is an example.

We have found room for and just purchased a 20ft Container. This will allow storage room for projects, allowing us to open on Saturdays to bring in working men and broaden our skill base.



Region Three News

Taranaki, Manawatu, Whanganui, Hawkes Bay and Wellington

A Seat at the Beach

The Napier Menz Shed has been making five colourful seats for down at Ahuriri Beach. The chairs are huge and are a talking point for visitors to the beach as well as being very popular for photographers. What a way to sit and overlook the sea. I am sure these are going to be very popular.



Out of Our Comfort Zone

It seemed a straightforward request to Menzshed Manawatu from St John – to construct a stand for volunteers at the Palmerston North Hospital.

This group of guys – more familiar with making stoat traps and items from rough sawn timber had to set their minds to constructing something of class and style, as it was to have pride of place in the Hospital foyer.



The Menzshed team and the finished product

A design was formulated, and this required accommodating all the requirements for disabled access, as well as ensuring it could be easily moved. Fortunately one of our members, Brian, had experience to guide us in constructing the unit, and the small team set about assembling the materials required – we had been donated a sheet of Seratone – with careful management, one sheet would be sufficient. Laminex supported the project with a sheet of material for the top, and we had a crash course in making veneered tops, and properly edging them.

The result was something that the Shed members are proud of, and fits well into the Hospital foyer.

Region Three News Continued

Otaki MenzShed

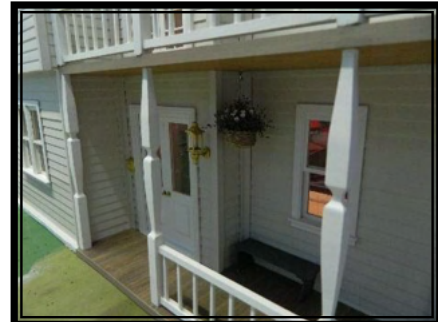
Last year one of our members and his wife moved to a retirement village where they had much less room. Both had, for many years, built doll's houses but there was no room for one unfinished house. They donated it to the Otaki MenzShed and this is how it looked when we received it together with paper bags full of material and some furniture.



One of our members took on the challenge and several months and many hours later this is what we had.



Most of the furniture had to be made, all of it needed painting.



The lights all work and the doors and windows open. One of the people we had previously done some work for fell in love with it and gave us a very generous donation. It is now in pride of place in their house where children do not get to play with it.

Region Three News Continued

Busy at Whanganui

Hi Folks, This is the first effort from the Whanganui area. We seem to be kept busy with furniture repairs, community projects and general members projects etc. One would never know what will come in the door next, some incredibly challenging projects. We have some exceptionally talented members and little by little one finds out the different talents and skills that members have. As is usual we can do with more floor and bench space.

At morning teatime there is between eighteen to twenty members there and by lunch time about five to eight stay with one or two coming in after lunch, our open days are Tuesdays and Thursdays 9am till about 3pm.

Last year we had a notable occasion with the presentation of life memberships to our three ninety plus year old members, one an upholsterer, one a carpenter, one a cabinet maker, a diverse lot with a lot of knowledge and skills being passed on.

About four years ago we inherited two aeroplanes, Snoopy and the Red Barron which are used in our annual Christmas parade, they needed a bit of a tidy up and we put a new undercarriage on one of them. They go really well and the public love them. That's all for this try at articles for the national newsletter and hopefully more next time. Watty Watson, Jim Ayres and John Wicks



One of our community Projects



Howzat for a 21st Birthday present for a budding cow farmer.



Region Three News Continued

From the Carterton Menzshed

Carterton is a small town, population approximately 7,000, situated in the Wairarapa valley 76 km north east of Wellington. It's bordered by the Remutaka and Tararua ranges on the west and hills at the East with the Rumahunga River coursing through.

We are a young club opening in 2017. With a small but dedicated core group. The club survived and now has a healthy membership with daily attendances of five to fifteen people.

Core activities include members' personal projects and community requested projects for non profit organisations and individuals, which helps to keep us solvent.

A recent garage sale of surplus donated goods tools and machines goods brought in over \$1,000. Freeing up much needed working space allowing purchases of new equipment to further increase benefits to members and community.

It is a great club to belong to, with energetic enthusiastic group of people always ready to pitch in and give their time to help a needy cause. A recent project, the limestone paths we created for an aged care establishment providing access to the gardens for the residents. Having members with expertise in fine wood working enabled us to take on major projects like the large Macrocarpa tables and bench seats for the local bowling club.

We are situated in a pavilion at the A&P showgrounds a few kilometres from town centre. The premises although not desirable, they are adequate and a relatively modest rental helps us to stay in the black but we are always on the lookout for more suitable premises closer to town.

MenzShed Kapiti - Amenities building.

Introduction

Our MenzShed Kapiti is fortunate to have the use of a Council site, of about an acre, and the use of an original building and additional buildings that MenzShed have built to use as work rooms, rudimentary kitchen facilities and storage space. Three containers also provide additional storage for equipment, materials and tools that have been donated. However, with 45 to 50 blokes coming to the Shed, the work areas are congested and cannot cope with the growing membership of 110+.



To ease some of the congestion and provide better facilities for the members, a new Amenities building is nearing completion. This new building will have a decent kitchen area, computer networking facilities and good audio-visual systems. It will accommodate about 60 people inside and will provide a place where members can sit down in comfort for morning teas – inside or out on the veranda. It will be ideal for holding training and safety sessions as well as hosting guest speaker talks on men's health and other topics of interest.

It is planned that the new Amenities facility will also become a community asset to be used by other community groups for meetings and the like. The building will have wheelchair access with fully accessible toilet facilities. This will allow more men in the community, who are not able to participate in the workshop environment, to come and be part of the MenzShed environment doing quieter indoor activities or just sitting on the deck supervising what is going on around them.

The idea for this new building to be a community asset used by other community groups was an important aspect in the planning and consent processes. It was a significant consideration in achieving Lottery, local Community Board, and other funding.

Region Three News Continued

Menzshed Kapiti Continued:

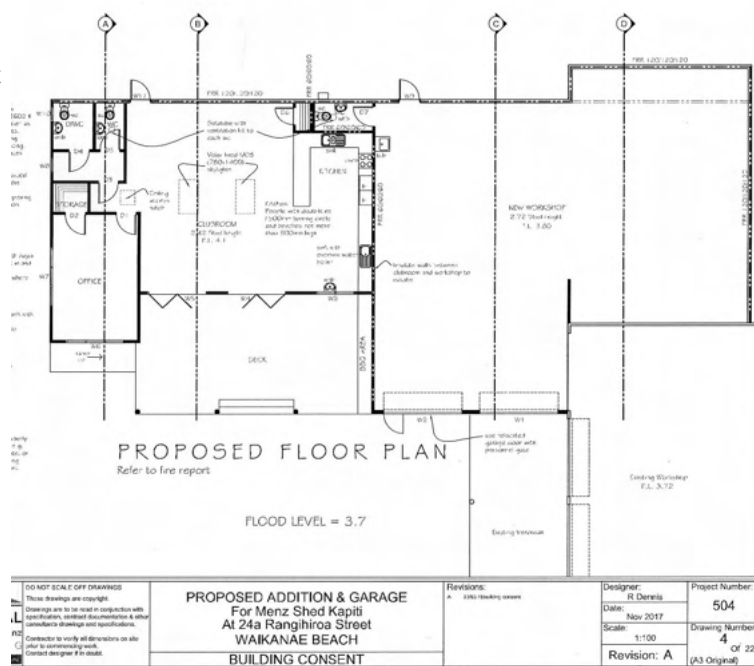
The 2nd stage of development that is about to be started is a 140m² workshop to provide space for equipment and to facilitate safe working in inclement weather.

Planning

Planning for the development of the MenzShed site started 3rd quarter 2015 with consultation with neighbours and working thru the Resource Consent process. This process took 18 months dealing with neighbours' objections and revising the draft plans taking into account the RMA, Council District Plans and Proposed Plans, and any heritage and cultural issues. The Resource Consent process was followed with architects and engineers for the design specifications and plans, and the issuing of a Building Consent.

Meanwhile fundraising activities were going on at the Shed and funding applications submitted to the various funding agencies. Our MenzShed is very grateful for the funding received from Transpower Community Care Fund, Lottery Community Facilities Fund, Waikanae Community Board, local Charter Club, local businesses, and the local community. Goods and services were also provided at cost or no cost by a number of local businesses. A big factor with the successful funding has been the fact that MenzShed has contributed significant funds from our own resources and members are also carrying out the building work.

The new building is about 110m² with another 35m² of covered deck. Total construction cost will be approximately \$155,000 which does not include the consent and professional fees. MenzShed members have carried out all the building and electrical work and engaged outside contractors for the specialist tasks such as concrete floor slab, roofing, plumbing, drain laying, and plastering.



Construction

Foundation work was started 3rd quarter 2019 but then had to cease for a couple of months while a new Lease agreement was sorted with the Council. Foundation work got underway again beginning 2020 and floor slab completed just before the March 2020 Covid lockdown. Work resumed after lockdown with truck load of frames and trusses delivered mid-June 2020 and since then building and other associated works have continued at pace with an anticipated completion and official opening of the new building late May 2021.

MenzShed Kapiti are very proud of the new Amenities building – it will be a tremendous asset not only for the Shed but also for the local community. This was recognised just the other week by the Waikanae Community Board who awarded a grant of \$14,600 to fit the building out with decent chairs and tables and the audio-visual system. If you have any questions on the process or need advice, please contact Peter Blackler at peteblackler64@gmail.com.

Region Four News

Canterbury and Westland

February Hub Meeting

Another successful Hub Meeting was held in February. Hub meetings are a big thing in Canterbury bringing together sheds from around the province. This hub meeting attracted sixteen sheds from as far north as Cheviot and the south to Timaru. About seventy members of sheds gathered to share their experiences, what's been happening in their shed since the last hub meeting and swapping stories. With the introduction of a swap table this added to the day. It was not long before the items placed for swapping vanished from the table. This will surely be another feature of the day. With a BBQ style lunch being provided at a cost of \$5 made for a great way to mix and mingle while enjoying the lunch. Thanks go to the Bishopdale Shed for the hospitality and lunch. The dust extraction system was a talking point for many who attended. Canterbury has four hub meetings per year and I am sure the sheds look forward to the outing. See you all at the next meeting in May. This is hoped to be at the new Cheviot shed.



Market Days At Oxford

The Oxford Shed is still battling with the council over some aspects of the requirements to obtain a permit to extend. We are getting closer by the day .

Our summer farmers market stalls have almost come to an end, and with that we have to start making items for sale for after the winter has passed.

We have had a great success with wind wands and trivets over the last few months and at the Oxford A&P show last week sold off all our stock of trivets and about forty five wands and ended up with presold orders for another thirty. Our main seller is the "reed" shape which we spit out on the wood lathe from all our 75x75 and 100x50 offcuts. Drill a hole in each end and insert a two metre length of 6mm steel round bar, a splash of fence stain and they are good to go.

Our new HD gazebo has been well worth the expense. Its easy to put up and helps to give us a real presence in the field .



Equipment tends to still be donated to us. We recently were given a blacksmiths forge and we have a new bench saw on order which was purchased on our behalf through an amount which was bequeathed .

Region Four News Continued

What are we doing this for?

Halswell Menzshed has been going for around seven years now and we felt at the end of a very disruptive (Covid) year we would re-examine some of the reasons why we were doing what we were doing. The whole venture had grown with over 100 members on our data base. New challenges were facing us as we attempted to keep up with regulations and processes that would ensure people were safe and happy at the Shed. For anyone in leadership, especially in voluntary type organizations knows that the time commitment for Shed work can grow quickly. Ensuring that we were clear about why we were continuing on was not merely important but essential.

The first step was taken by convening a combined meeting of our Trustees with our Steering Group who were the more 'hands on' Sheddies attending the Shed. A half –day retreat to 'brain storm' our vision together was agreed upon.

Reporting back to a wider group at a Saturday morning shed breakfast was our second step. Letting others know why we were passionate about the Shed was important.

Finally we decided to publicise our conclusion with the creation of a new vision statement sign.

So why were we Shedding?

Halswell Menzshed began from a small Christian group of men in Halswell Baptist Church. Concern for people particularly men was our priority. The spiritual, mental, emotional and physical well- being of men locally was our focus.

Our three step process at the beginning of the year helped to remind us of what was important. Our sign helps us keep our focus on what is important to us.

People were more important than our projects.

Who we are with was far more important than what we were doing.



Region Four News Continued

Cheviot Menzshed

We continue to develop our building with the hope we could be operational around mid-year. In the meantime it's still business as usual from the woodwork room at the Cheviot Area School.

The school want to re-purpose the woodwork room and are keen for us to move on, but there's no pressure as they are well aware that funding and compliance requirements take time. But, we've had verbal confirmation that we'll become the owner/guardians of the existing machinery, equipment and hand tools.

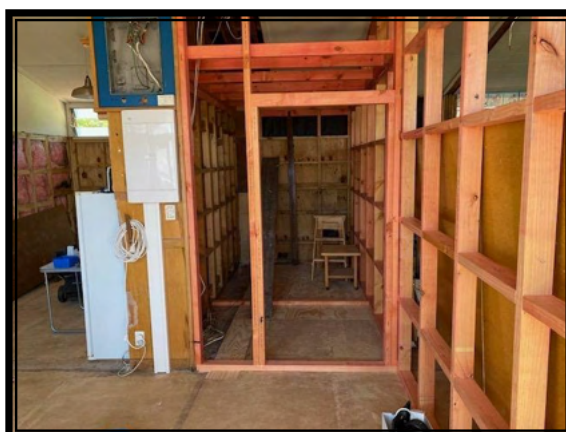
This will allow us to continue working with students later in the year. Since Covid lockdowns we've experienced a 30% membership growth after new arrivals to our town – many having been affected by way of redundancy or other financial pressures. We welcome our new arrivals who bring many skills and hobby interests which will further expand the skill base that our MenzShed already offers our Community.

At this stage we're still looking forward to hosting the MenzShed Hub meeting at the end of May. The workshop might still be a shell but we see this as not being a bad thing. We've visited a number of Canterbury Sheds to look at their workshop setup so we know the experiences of other Sheds, and their helpful members will see our potential and we look forward to any advice or suggestions – especially around air purification, ducting and dust collection.

Within the main building we'll have a 8m x 9m workshop, a 8m x 11m machine shop, new compliant toilet, and a meeting and smoko lounge.

Hopefully by the end of the year we'll have developed our light Engineering workshop and storage at the rear of the site. This will provide a 6m x 5m covered carport style hot works area in between a shipping container and a 8m x 3.5m storage shed.

Bruce Nicol Chairperson



Region Four News Continued

Rolleston Men's Shed

As mentioned in the previous Newsletter, tables keep going out the door, either refurbished or made up from salvaged items such as bed head-boards. A small one recently was made from a cupboard door and table legs that had been donated to the shed.



A combined wood and metalwork project was a gaga pit or dodgeball rink for West Rolleston Primary School. The side panels are plywood and the joiners are metal pieces bolted to the side and with metal rods to hold it together. When removed, they allow packing down for storage afterwards.



A recent job the Shed received to fix was reminiscent of the The Repair Shop TV programme. It was a bell and a few other bits with it. The start was to read the Latin inscription "QUI ME TANGIT VOCEM MEAM AUDIT" meaning "He who touches me hears my voice", on the bell and searching for it on the web. Immediately came the answer, a door bell with a pull chain and the clapper in the bell to ring it. The cast brass mounting plate was missing. A discussion with the owner and a shaped brass plate was cut and fastened. Not as elaborate as the original but in the same style and another happy customer.

A large item in the Woodwork shop gave everyone the impression that a church pew was being refurbished. No, it was a bedhead and was being made into a pew with a cupboard under it.



The Electronics section has put out an Electronics Newsletter and the second edition has just been sent to those who have expressed an interest. Contact the Rolleston Shed if you want a copy or look on their website and download a copy or you can go to the following link to view there newsletter:

<https://rollestonshed.wordpress.com/newsletters-3/>

Plastic sauce bottles might not be the tidiest item on a table but this has been fixed. A member is making miniature versions of picnic tables with two holes in the table for the bottles to fit into.



Region Four News Continued

St Matins Menzshed Begins

The idea of launching a Menzshed for St Martins, and surrounding south Christchurch suburbs, began with a meeting in mid-2019. Twenty or so interested locals arrived at the church hall, listened and signalled their enthusiasm for the idea. A committee was selected, and so it began.

That said, the origins of our shed lay awhile before that date. A survey had been conducted by the Presbyterian church. That survey identified a gap in social opportunities for older and retired men in our part of Christchurch. Being the wrong side of 21 (well of 31, and of 51, and maybe even of 61...), the minister of the church decided to see what he could do to fill that gap. He placed a notice on the Neighbourly website. That message invited anyone who was interested in the idea of developing a Menzshed in our suburb to come along to an informal meeting.

And that was all it took! Well, that and the 18 months of hard work by the committee and members, with the help of some luck along the way. But that first step, that invite to a meeting just to see what would happen, has led to great things. Those great things being our own well-equipped woodwork workshop, electrical workshop, social room (and even our own toilet!).

One of the biggest challenges for any aspiring shed-to-be is getting a location and a building. Sometimes you can score one without the other. We were offered sole use of the two community rooms at the back of the church premises, and the opportunity to build on another part of their grounds. As appreciative as we were for the rooms, they were too small to become a workshop for wood. So, the committee started putting out the word, and soon had that stroke of luck. A local building company had been contracted to remove an old classroom from a Canterbury school. They decided it would be cheaper to relocate the whole classroom to a new location than to demolish and dispose of the materials. We were offered the old classroom, to be relocated by that company at their expense. As the kids say – “Result!”.

The arrival of that building early one morning on an impressive truck, and the last part of its journey spent swinging through the air above the church office building, marked the start of the next challenge we were to face.... getting the building compliance. That part of creating a shed certainly needs lots of patience, mixed with a surprisingly high level of professional fees. If you ever plan to go through this journey yourself, just be aware that large charges and demands can appear from unexpected corners. All we can say is beware the reports of the fire engineers! We also found that every few inches of height between the entrance and the ground makes for a considerably longer accessibility ramp.

Finally, on February 20th this year, we welcomed members and visitors to our grand opening. The hopes of chopping through a timber beam with a chainsaw or circular saw to officially open the workshop were shut down by our vigilant Health-and-safety-aware team (such a shame as that would have been fun!), so a large vintage pit saw was used instead. The building looked great, complete with its accessibility ramp designed and built by our members. We are forever grateful to those steadfast folks who came to cut and drill and hammer and wire and paint on mornings warm and cold. It reminds me how lucky we were to have such a good team come together.

Since the official opening, our members have started working on their own projects, and on a few community projects. A couple of retired professionals are helping to upskill members on using the larger woodworking tool. Coloured dots which show machine competency are proudly appearing on many name badges.



Region Four News Continued

St Martins Menzshed Continued

Now begins the next phase in the story of our shed. Donated tools are getting housed in drawers and cupboards, with some keen chaps even measuring and sorting whole boxes of random drill bits. The smoko bell has been given a new handle, making it is easy to find. And each week we get one or two new membership forms handed over from visitors to our rooms. Happily we are getting contacted by local community groups seeking our help with various projects, so soon we will have tasks of all varieties for our members to work upon together.



If you are ever in the area on a Wednesday or Saturday morning, do come and visit – you'll find us on St Martins Road in Christchurch. And if you arrive around 11 am, there might even be some chocolate biscuits left if you are lucky!

To finish, I want to thank all our sponsors, the kind donors of tools and equipment, and the St Martins Presbyterian church without whom we would have greatly struggled to open for business today.

A Whare for Waitakiri School – New Brighton Menz Shed

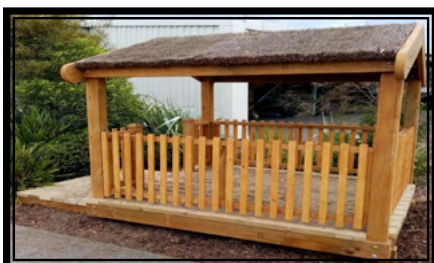
A request for the shed to build a 2 by 3m Whare for the younger pupils at Waitakiri School led to considerable discussion within the shed. We love doing community projects but our preference is for projects that can be completed at the shed. With no external space where we could build the Whare, there were reservations about the amount of internal space such a project would occupy. Could we live with building the project within the shed and did we have enough interested members to build it?

First step though was to create a design and budget that could then be discussed with the school and our shed membership to make sure there was full support before going ahead. Based on an existing Whare the overall dimensions were easily defined but the specification of the construction and component parts generated far more alternative views within our shed than one expected.

A small model was built and that was very useful in teasing out the final design and specifications. In the end, the Whare was going into a school and heavier materials were used than one might have used for a garden Whare.

We built the Whare within our workshop as a kitset as it would have to be dismantled for transport to the school. It did take up a lot of room and were we to ever build another, we would approach it differently minimising the disruption within our shed.

The treated Radiata timber was supplied by ITM, Dyers Road, Christchurch. Cabots NZ donated Aquadeck and other companion products and Brustics Auckland supplied the Brushwood fencing panels that were used for the roof. Having completed the Whare except for the brushwood roof, it was dismantled and taken to the school. Reassembly went remarkably quickly and as you can see from the picture, the pupils were pleased with the result.



Region Five News

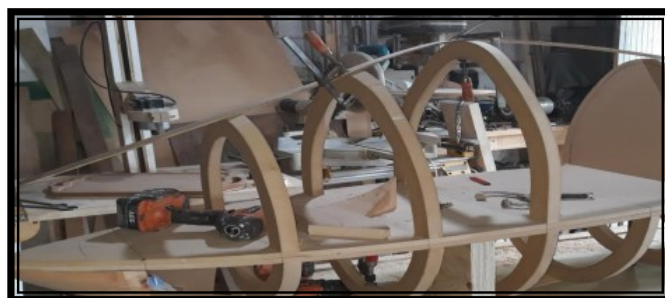
Otago and Southland

The Bike that Rocks

Burt Munro Rocking motorbike - World's Fastest Indian replica



The Invercargill city library were wanting to replace the aging rocking horse and approach the menzshed about building a rocking motorcycle. After some consideration the idea of a Burt Munro rocking motorcycle was agreed upon. Because the menzshed was closed over the Christmas break it was decided that I would build it at home in Wallacetown



The frame of the bike is made up out of MDF and covered with strips of MDF which are run around on a diagonal. There is two layers of strips which were glued together. The nose cone is made from a block of macrocarpa 200mm square. The body of the bike was covered in cloth and filled and paint was applied. The wheels were supplied by Southland Honda. These were cut in half and fitted to the bike. The rocker frame was built up out of laminated MDF

The artwork on the bike was done by Ian Veint.

The upholstery for the seat was completed by the sister of a member of the shed.

It was quite a challenge to get the shape and size in perspective having only photographs to work from.

The whole project took around eighty hours to complete and was quite rewarding at the finish.

A great job, well done Peter Bailey from the Invercargill Menzshed



Bugger Covid-19

As I write this article we have just moved back up a level to level 2. Twice in a few weeks. How can you plan ahead. It's been heart breaking for the conference committee to pull the plug on holding a National MENZSHED conference in 2020 and 2021. The 2020 conference that was to be held at St Hilda's Boarding school building was a great venue with everything under one roof and a view to be appreciated. The programme had a list of good topics to suit you all, plus off site visits and you would have gone home with plenty of goodies in your bags.

THEN COVID ARRIVED AND KILLED EVERYTHING. Two years planning down the drain.

The committee tried to carry everything over to 2021 using the same facilities but covid -19 was and is still knocking on our door causing uncertainty. Some of our speakers that we had wouldn't be available for 2021. Also sponsorship became much harder to achieve. This meant that our costings came too high for those attending, thus the conference would run at a considerable loss. Following all this, the committee looked at trying to put virtual conference together. We didn't have much experience in this venture but were ready to give it a try. Again it appears that due to lack of interest and costs by sheddies to try this new venture, the committee in conjunction with the National body decided to discontinue the 2021 conference. Sorry guys, we tried very hard and gave it our best shot, three years planning and hard work hasn't brought a better outcome. I as committee convenor, thank the committee members of the two sheds, North Dunedin and Taieri Blokes Shed also James Sunderland for all their effort in putting a conference together. I wish the next conference committee "All The Best for 2023". Bugger Covid -19
Ian Miller Otago, Southland Rep.

Sponsors and Discount Benefits

Visit our web site to find out more about each company and the benefits they provide to member sheds.

www.menzshed.org.nz/membership/benefits/

