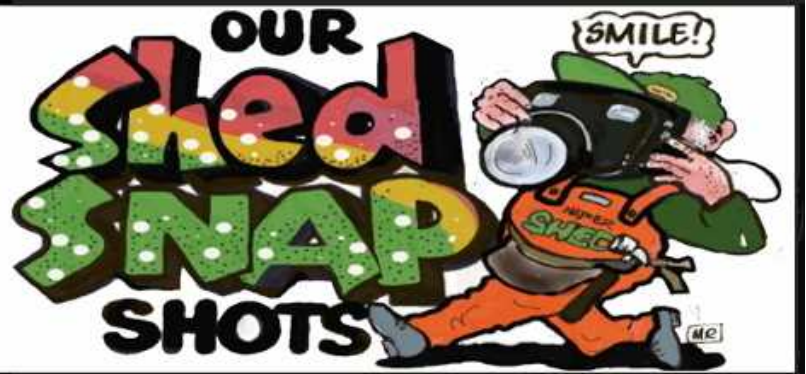


August 2021



Not much to report this month as we have been closed for the latter half of it..

I know that Jon Fitz has rung many of you, checking that you are coping ok. It's always good to hear the pleasant familiar voice of someone who is genuinely concerned about our welfare. Thank you Jon, it is appreciated.



Mitre 10 Ladies Night

Preparations for Mitre Ladies Night are well under way. Some 300 plus plant stand kitsets have been produced up to now.

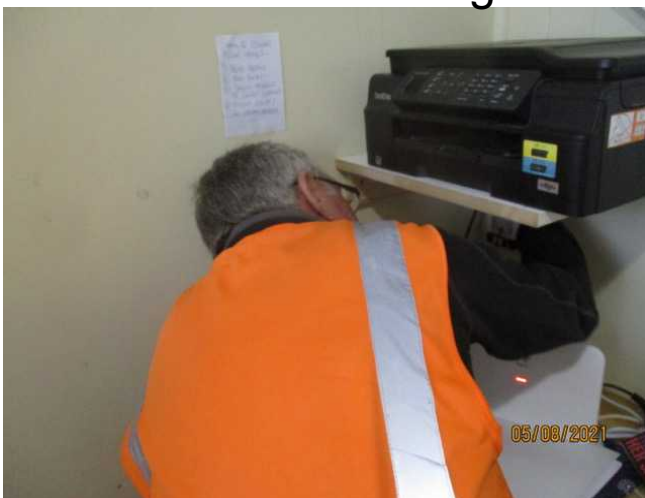


There are about 100 to go. The timber for the remaining stands was due to be delivered on the Wednesday that the lockdown started.



Before the lockdown started. A group of our members and some from The Hastings Shed met at the Napier Boys' High School to inspect the facilities for the National Conference and AGM that we will be hosting in April 2023.

Chorus connecting us



Real Estate who have funded the connection and will also fund the ongoing costs.

Ian Levet's Dodecahedron in rimu. Ian started building this at the



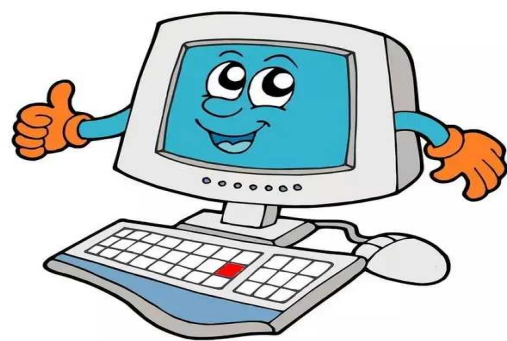
Shed and has finished it at home during the lockdown. Ian told me that the lockdown needs to end as he is running out of shovel ready projects.

We are now on-line. Chorus connected us to the internet this month. Thank you to Brian & Brenda Fulton of Harcourts

The pram restoration progresses



Important discussion



Thanks to Russ for some of the photos.

Any comments, or items for inclusion in the next newsletter please to the editor
Ian Appleton
ian@appletonpianos.co.nz

Our website www.napiermenzshed.nz continues to receive good traffic. From the 1st August to 29th August it received 249 visits from 198 unique visitors. That is down a bit on some recent months. In May it had 408 visits from 329 visitors.

A message from the Menzshed NZ Chairman.

Hi folks,

I hope all is well in your shed and the members are doing Ok while we are shut down.

September is the BLUE MONTH. Yes prostate cancer month. I would encourage each shed to look towards doing something to raise the issue of Prostate cancer with their members.

It could be:

Blue hair days at the shed.

Wearing blue clothing.

Blue food for morning tea. Divide the shed members into groups to provide morning teas.

Sharing a breakfast or lunch.

Putting up posters relating to Prostate Cancer.

Inviting a health worker like a doctor, practice Nurse etc to talk with the men.

Having a person who is a member of your shed talk about their experience of having prostate cancer.

Encourage all members to have a regular check up for prostate cancer.

If still in lock down hold a ZOOM meeting for members.

Encourage members to visit the Prostate cancer website.

<https://prostate.org.nz/event/blue-september/>

If sheds are open then you could make some products and sell them and donate the funds to Prostate Cancer Society.

If prostate cancer is found early then there is hope for a very positive outcome. Blokes being blokes, we do not give this cancer the attention it needs. This next month is our opportunity to get active. It may save someone's life !

Stay safe

Regards Trevor

I can't see our members dying their hair blue, can you? If they did it would hardly be noticable on many of our thinning heads!

Perhaps I see a request to Brian for another of his informative talks coming?